

ISO/IEC SQuaRE : The second generation of standards for software product quality

W.Suryn, A.Abran, A.April
ETS Engineering School, Montréal

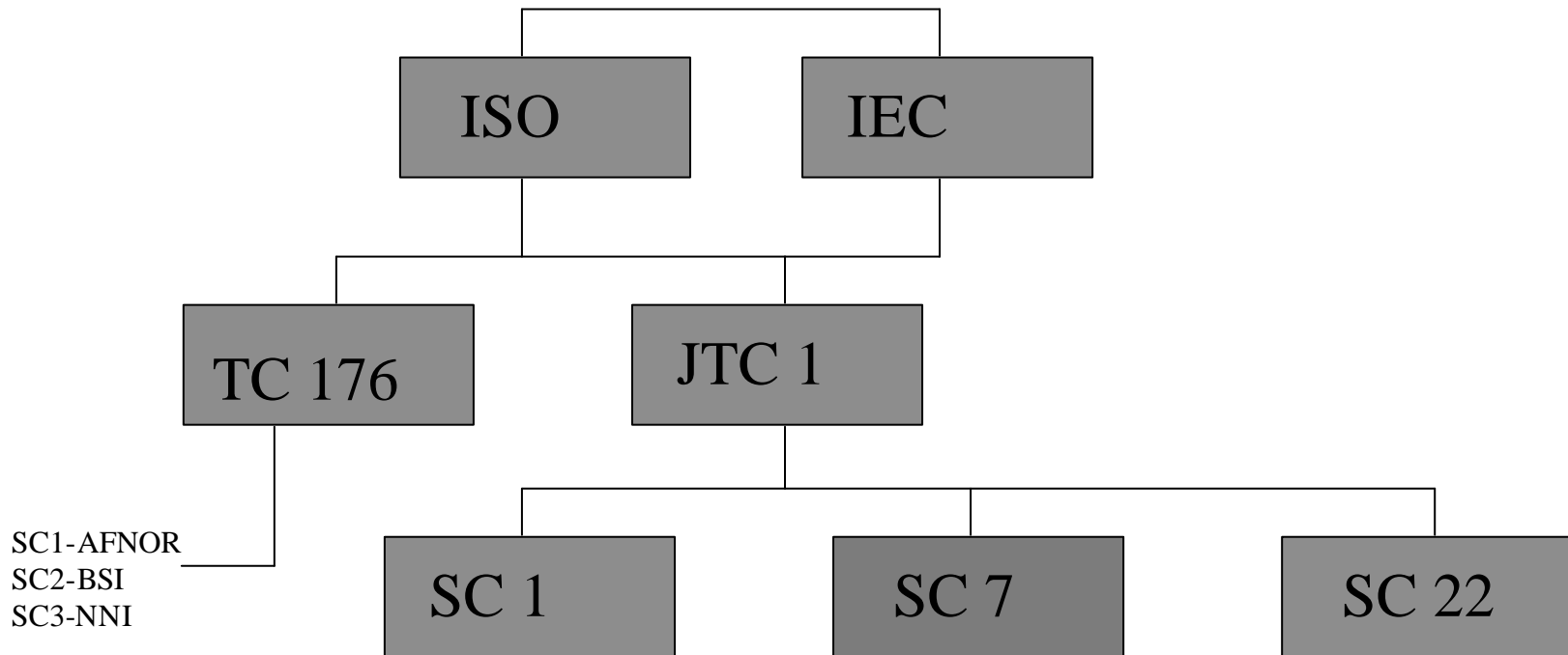
IASTED

Marina Del-Rey November 5th 2003

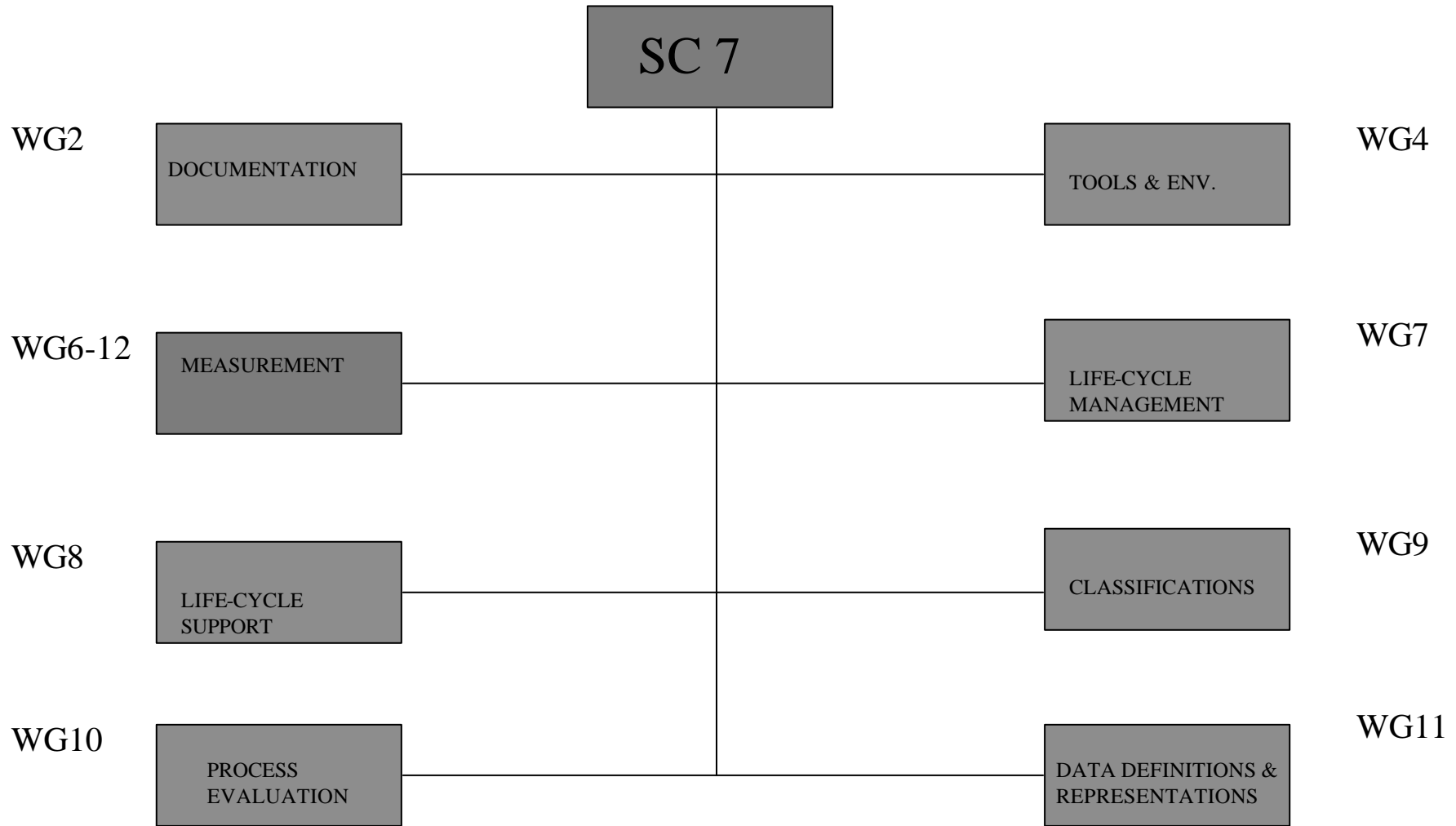
Presentation Topics

- Who develops the software related standards in ISO
- What is the current software product standard of ISO
- Overview of ISO9126
- What are the components and where do they apply
- Is it used (results of the web-based survey)
- The next generation SQuaRE design

Software International Standards



SC7 Components



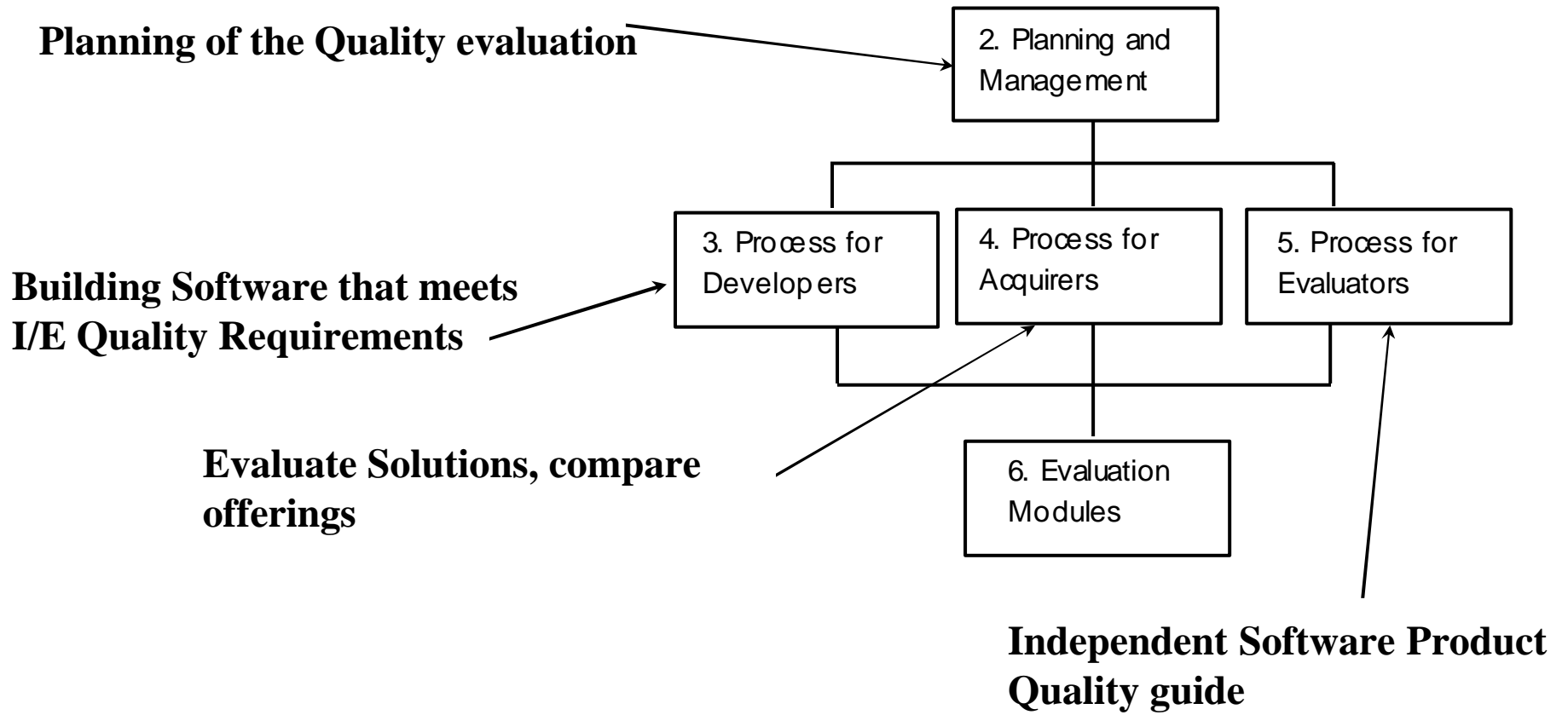
SC7/WG6 Current documents

- ISO/IEC 9126-1 --- Part 1 Quality Model (Japan + England)**
- ISO/IEC 9126-2 --- Part 2 External Metrics (Japan+Canada)**
- ISO/IEC 9126-3 --- Part 3 Internal Metrics (Japan+Netherland)**
- ISO/IEC 9126-4 --- Part 4 Quality in Use (USA)**

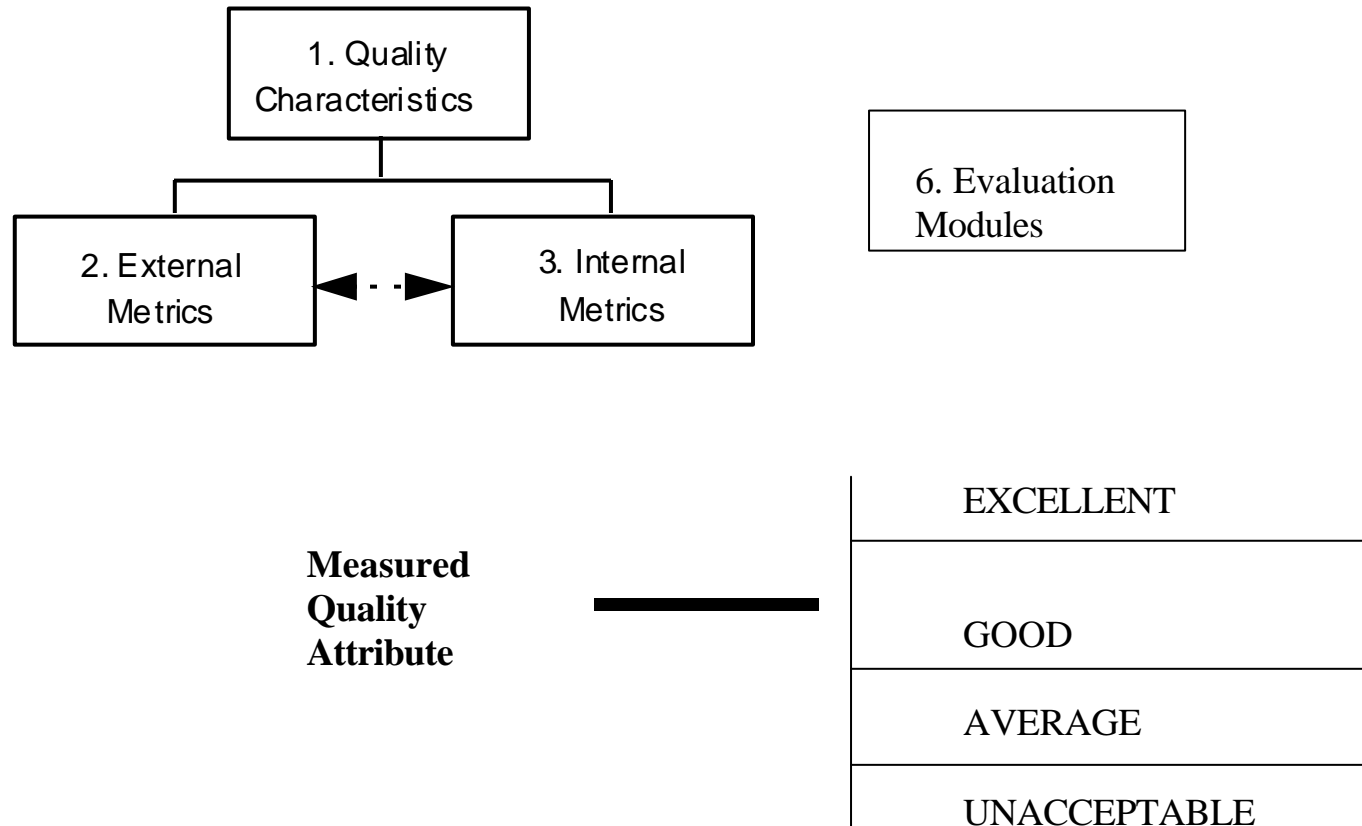
Product Evaluation guides (perspectives)

- ISO/IEC 14598-1 --- Part 1 Overview (Japan+England+USA)**
- ISO/IEC 14598-2 --- Part 2 Planning & Management Guide (Angl.)**
- ISO/IEC 14598-3 --- Part 3 Developer's Guide (USA+Denmark)**
- ISO/IEC 14598-4 --- Part 4 Acquirer's Guide (Canada)**
- ISO/IEC 14598-5 --- Part 5 Evaluator's Guide (France)**
- ISO/IEC 14598-6 --- Part 6 Evaluation modules (Denmark)**

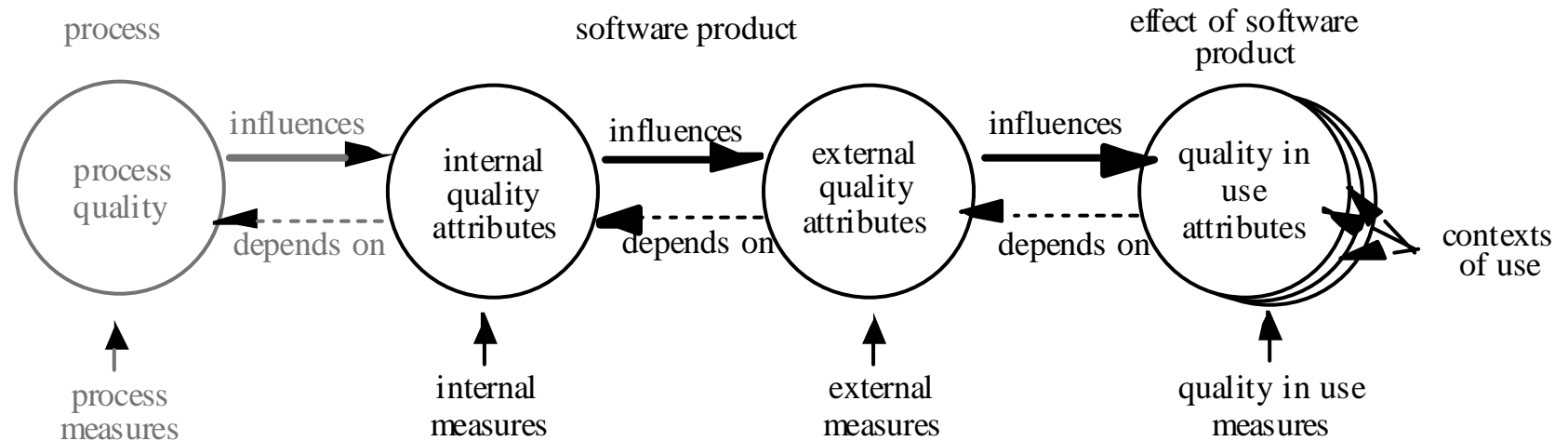
Model includes many perspectives



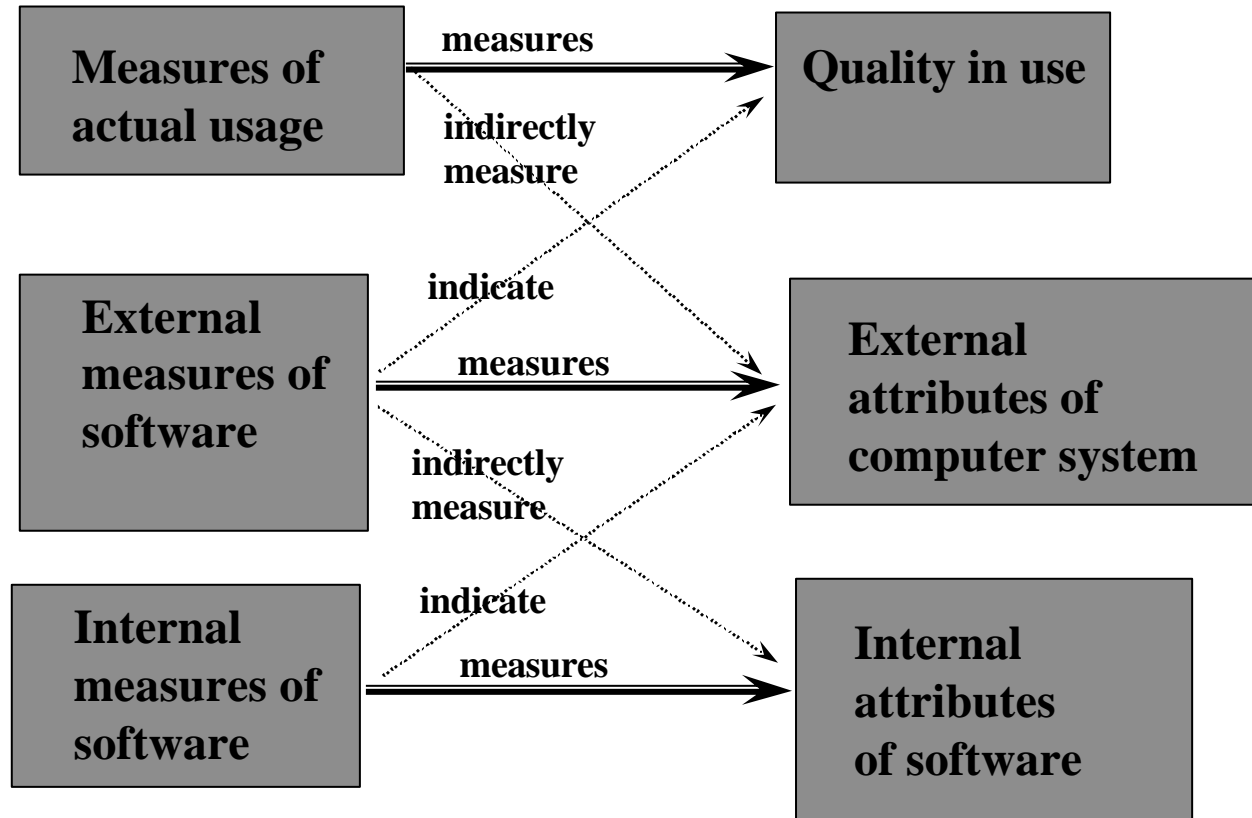
Common to all the perspectives



Quality Model of ISO9126



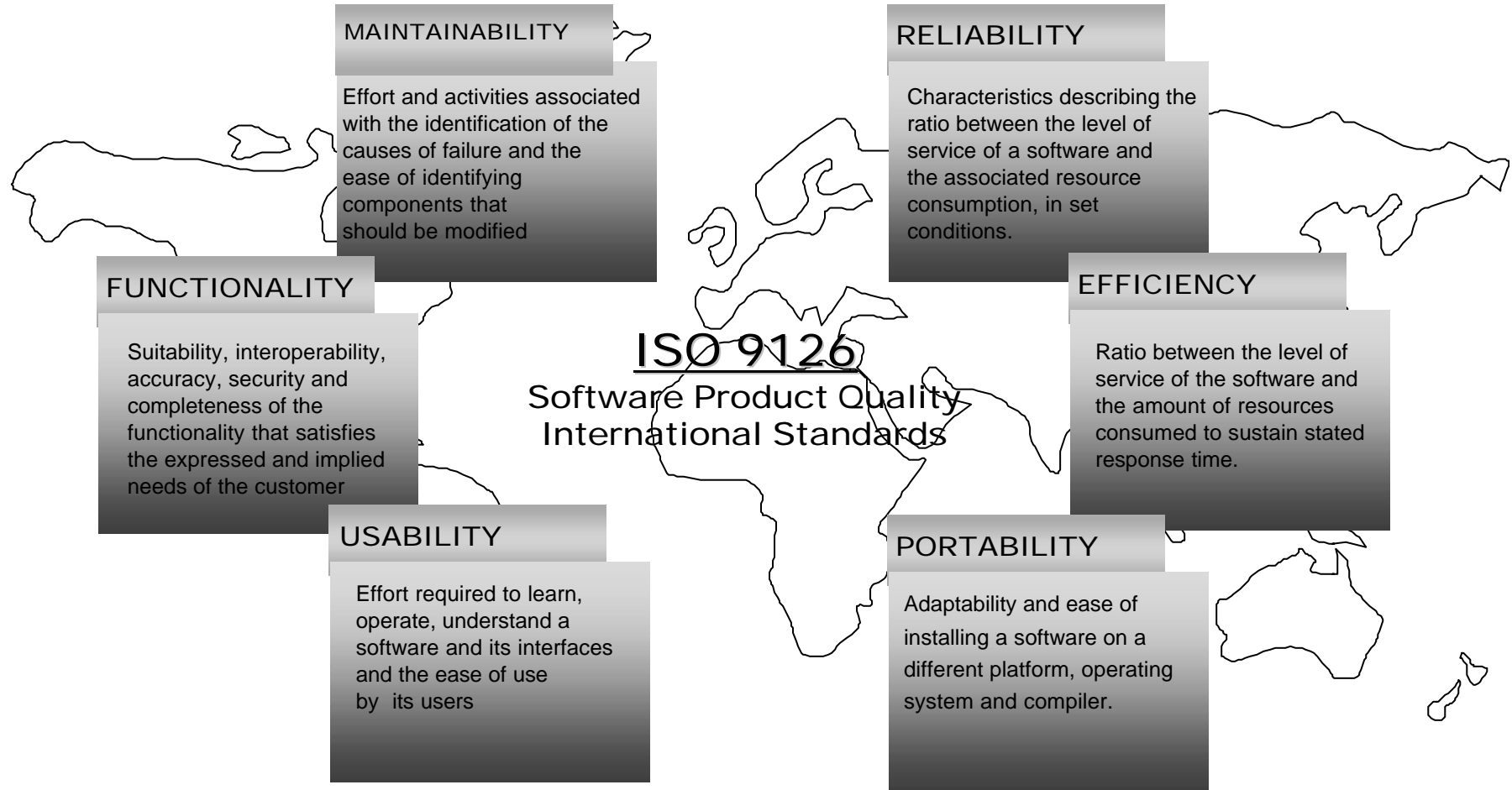
Relationship model metrics/attributes



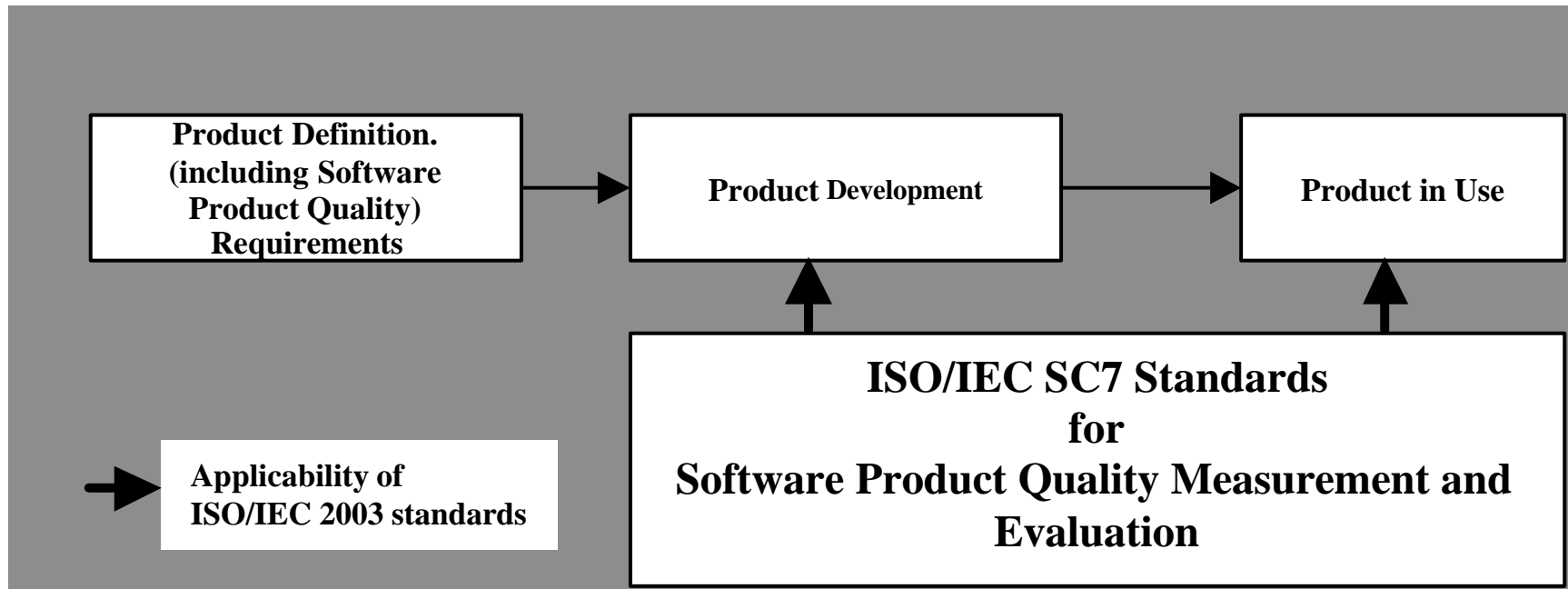
Definitions

- *internal measure*: **A measure derived from the product itself. It is not derived from measures of the behavior of the system of which it is a part.**
- *external measure*: **A measure of a product derived from measures of the behavior of the system of which it is a part.**

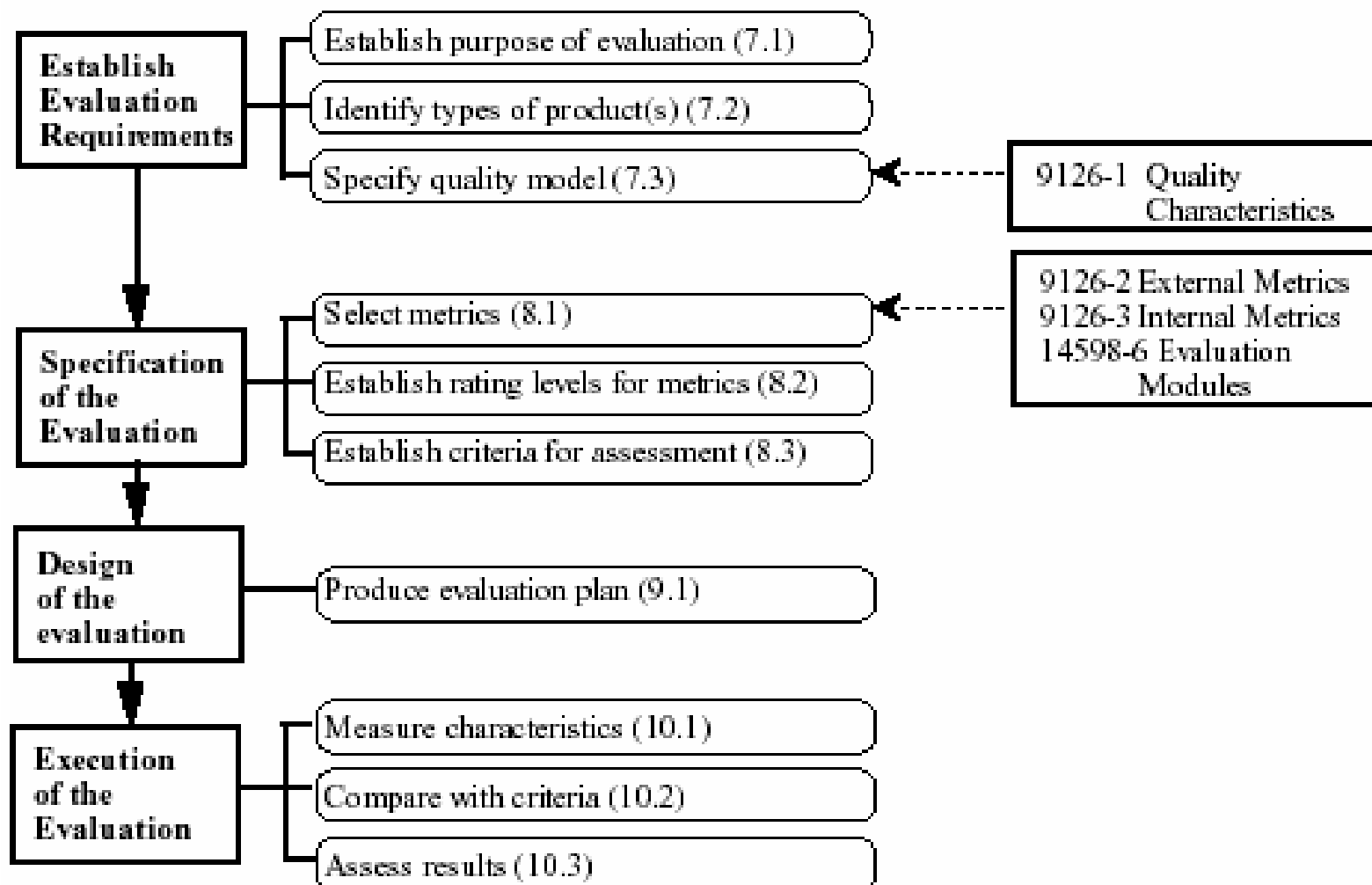
Characteristics of ISO9126



Where does it apply



It is also mapped with ISO14598



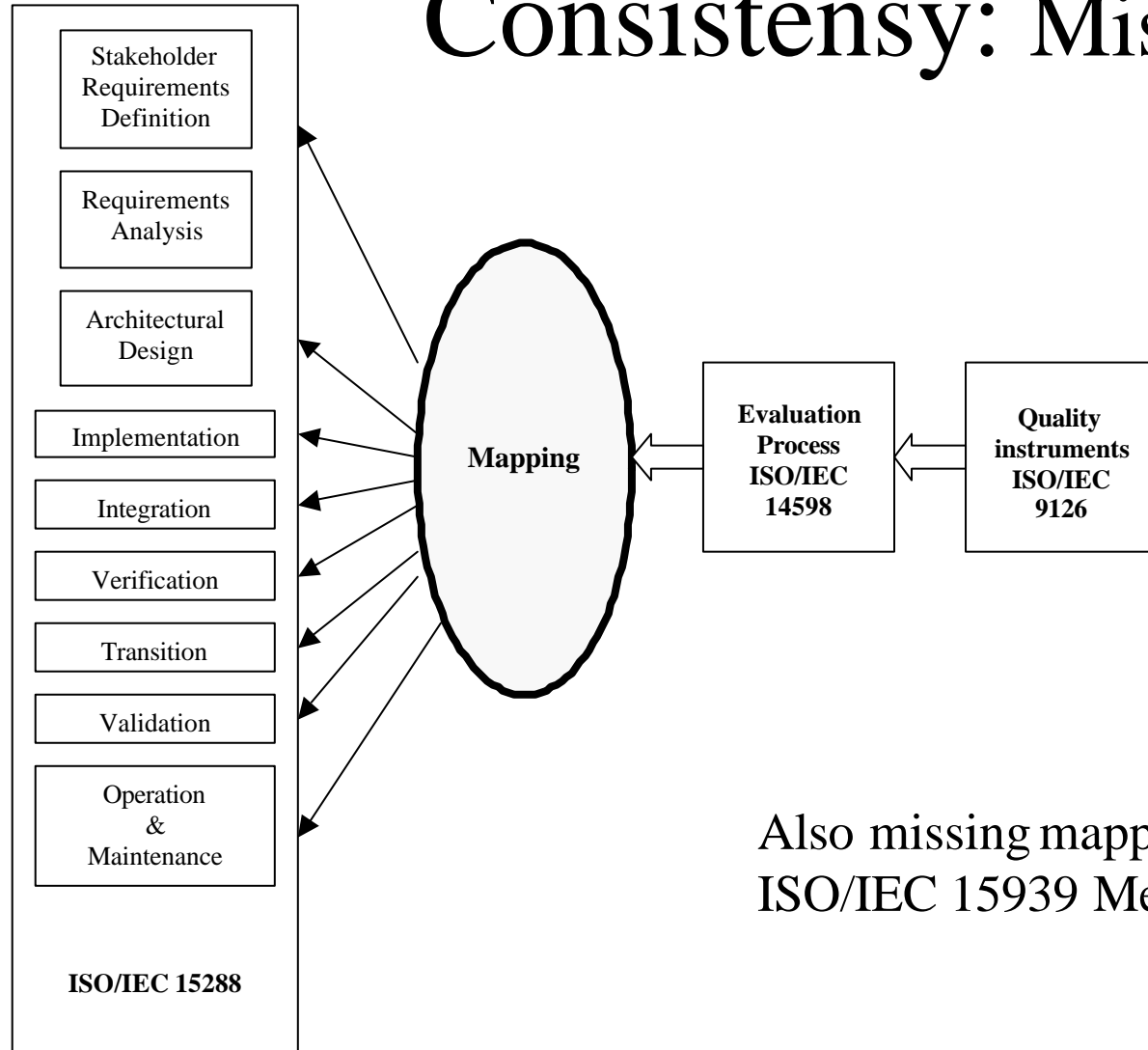
WG6 Survey of users of ISO9126

- 2001-2002
- Feedback from practitioners & academia
- 60 companies from 12 countries
- Completeness issues
- Consistency issues
- Scope of applicability issues

Completeness: Missing mappings

- There is a need for a standard to tackle the software quality requirements specifications
- A need for verification of the quality measures

Consistency: Missing mappings



Also missing mapping with the emerging
ISO/IEC 15939 Measurement Model

Applicability: More guidance

- Enhancements to better address quality needs in life-cycle phases
- End-User guidance
- Workflow to support the documentation to guide the users

Next Generation SQuaRE

- Includes a Quality requirements standard;
- 14 documents grouped in 5 Topics:
 - Quality Management
 - Quality Model
 - Quality Measures
 - Quality Requirements
 - Quality Evaluation

SQuaRE : Quality Management

- Guide to SQuaRE – overview of the structure and terminology;
- Planning & Management – to provide guidance for planning & managing software product evaluations.

SQuaRE : Quality Model

- Quality Model and guide – describes the model for internal/external quality and quality in use. Presents the characteristics and subcharacteristics.

SQuaRE : Quality Measures

- Measurement reference model and guide;
- Measurement primitives;
- Measures for internal quality;
- Measures for external quality;
- Measures for quality in use.

SQuaRE : Quality Requirements

- Quality Requirements and Guide – to enable software product quality to be specified in terms of quality requirements all along the life-cycle of a software project or acquisition, maintenance and operation.

SQuaRE : Quality Evaluation

- Quality Evaluation and guide
- Process for Developers
- Process for acquirers
- Process for evaluators
- Documentation for the evaluation module

Hyper–Media Guide to SQuaRE

