

Performance measurement for cloud computing applications using ISO 25010 standard characteristics

Anderson Ravello, Jean-Marc Desharnais, Luis Eduardo Bautista Villalpando,
Alain April, Abdelouahed Gherbi

Department of Software Engineering and Information Technologies
École de Technologie Supérieure, University of Quebec, Montreal, QC, Canada
ravello@gmail.com, jean-marc.desharnais@etsmtl.net, luis.bautistav@gmail.com,
alain.apri@etsmtl.ca, Abdelouahed.Gherbi@etsmtl.ca

Abstract— Measuring the performance of cloud computing-based applications using ISO quality characteristics is a complex activity for various reasons, among them the complexity of the typical cloud computing infrastructure on which an application operates. To address this issue, the authors use Bautista’s proposed performance measurement framework [1] on log data from an actual data center to map and statistically analyze one of the ISO quality characteristics: time behavior. This empirical case study was conducted on an industry private cloud. The results of the study demonstrate that it is possible to use the proposed performance measurement framework in a cloud computing context. They also show that the framework holds great promise for expanding the experimentation to other ISO quality characteristics, larger volumes of data, and other statistical techniques that could be used to analyze performance.

Keywords: cloud computing, ISO 25010, SQuaRE, big data, measures.

I. INTRODUCTION

Cloud computing is complex environment which is dependent on a number of IT infrastructures, including components that are often widely geographically dispersed, with shared elements and running diverse applications [2], [3]. This technology uses hardware and software to deliver ubiquitous, resilient, scalable, billed-by-use, agnostic application systems [4]. There are many advantages [5], [6] and disadvantages [7], [8], [9] to using such a technology, and one of its major disadvantages is addressed in this research: **unreliable system performance due to the complexity of the infrastructure**

Bautista et al. [1] propose a performance measurement framework for cloud computing systems, which integrates the software quality concepts proposed by ISO 25010, which states: “*The performance of a Cloud Computing system is determined by analysis of the characteristics involved in performing an efficient and reliable service that meets requirements under stated conditions and within the maximum limits of the system parameters.*” [12] In their attempt to put the ISO 25010 concepts into practice, the authors found it a challenge to identify and **map the base measures and derived measures (ISO/IEC 25021 and**

ISO/IEC 15939) that need to be linked to ISO characteristics and sub characteristics representing the system’s behavior.

The objective of this research was the measurement of the time behavior quality characteristic of a cloud computing environment with the application of Bautista’s performance management framework (as presented on 2.E) and, with its application, explain how base and derived measures can be mapped to reveal the performance of a cloud-based application.

We have chosen as our case study a large Microsoft Exchange application installed on a private cloud and its distributed clients that run Microsoft Outlook in order to test the proposed Bautista et al. framework on the measurement of unreliable system performance taking into account the complexity of the infrastructure. The results show that we have found a means of mapping base and derived measures, based on suggested characteristics and sub characteristics in ISO/IEC 25010, which simplifies the representation of the cloud computing infrastructure, and also validates the usability of the concepts expressed in the ISO/IEC 25010 standard. This initial research activity will help identify the relevant derived measures for statistical analysis of ISO quality characteristics in cloud computing applications.

This paper focuses only on the concept of time behavior characteristic defined in ISO/IEC 25010.

II. ISO/IEC 25010 SOFTWARE QUALITY ASSESSMENT STANDARD

A. The ISO 25000 Family of standards (SQuaRE)

The Software product Quality Requirements and Evaluation, (SQuaRE) series of standards is composed of many documents destined for many different audiences. It is made up of 5 groupings and 14 documents, the most important of which are shown in Figure 1: Quality Management (ISO/IEC 2500n), Quality Model (ISO/IEC 2501n), Quality Measurement (ISO/IEC 2502n), Quality Requirements (ISO/IEC 2503n), Quality Evaluation (ISO/IEC 2504n) and its Extensions (ISO/IEC 25050 - 25099).

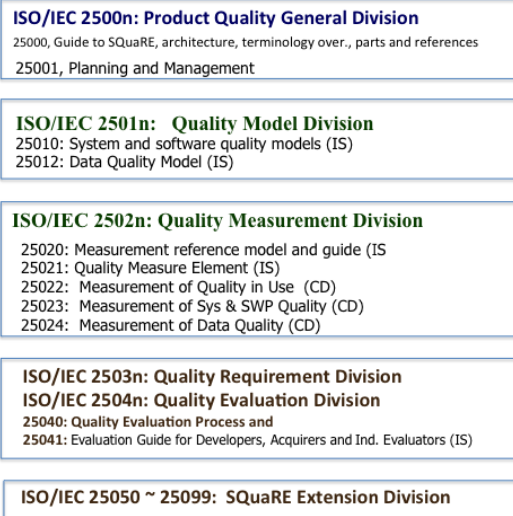


Figure 1: Five document groupings¹.

B. ISO 25010 characteristics and sub characteristics

ISO 25010 describes three different quality models for software products: 1) quality-in-use model; 2) product quality model; and 3) data quality model. Each of these models proposes different quality characteristics to represent the quality concepts required to assess software performance from the various perspectives. The first of these, the quality-in-use model, which is designed to measure the quality of software from a user's perspective, proposes five characteristics: effectiveness, efficiency, satisfaction, freedom from risk, and context coverage. The second, the software product quality model, proposes eight characteristics: functional suitability, performance efficiency, compatibility, usability, reliability, security, maintainability, and portability. (We do not consider the data quality model in this paper.)

The main challenge in assessing quality in use and the quality of a software product is to answer the following questions:

- What are the best characteristics and sub characteristics for evaluating the quality of the system to be measured?
- Which derived measures will help in evaluating the quality of the system to be measured based on the characteristics and sub characteristics selected?
- Which measures can be used to form the basis of the derived measures?

In the next section, we explain the concepts of the base measure and the derived measure, as defined by the ISO.

¹ (IS) means that the document is already a standard, and (CD) means that the document is in the process of being written or rewritten

C. Base and derived measure concepts (ISO 15939 and ISO 25021)

A base measure is "a measure defined in terms of an attribute and the method for quantifying it" [10], and is derived from a **measurement method**. The same definition is proposed in the International Vocabulary of Basic and General Terms in Metrology [11]. A derived measure is a measure that is defined as a function of two or more values of base measures [12, 13]. This definition is an adaptation of the one in the International Vocabulary of Basic and General Terms in Metrology² [11] [14] [15]. A measurement method is defined as a logical sequence of operations, described generically, which is used in quantifying an attribute with respect to a specified scale [14]. It is also based on the definition in [11].

D. Cloud computing references and standards

According to the cloud computing (CC) study group of ISO subcommittee 38, CC "is a paradigm for enabling ubiquitous, convenient, on-demand network access to a shared pool of configurable cloud resources accessed through services which can be rapidly provisioned and released with minimal management effort or service provider interaction" [15]. This technology employs hardware and software to deliver ubiquitous, resilient, scalable, billed-by-use, agnostic application systems (Prasad, 2010). CC service technology is often subdivided into four different service categories, where each category possesses a common set of qualities. The Cloud service categories are: 1) Infrastructure as a Service (IaaS); 2) Platform as a Service (PaaS); 3) Software as a Service (SaaS); and 4) Network as a Service (NaaS). Services in each category may include capabilities from one or more cloud capability types [16]. These service models can be hosted and managed in-house or offered by third-party providers. In this first research case study, the CC infrastructure analyzed is a Private Cloud [17] [18] [19].

From these definitions, we can see that CC is a technology that relies on the connectivity provided by the Internet to allow easy access to shared pools of resources, and withdrawal from those shared pools without much administrative effort. In principle, these shared resources allow a high degree of flexibility to process variable workloads and can be managed via a service level agreement (SLA) describing the expected behavior and performance of a CC service. From the SQuaRE perspective, the quality in use of a CC service is directly linked to the quality of the network infrastructure, as well as to the configuration of its pooled resources.

² The International Vocabulary of Basic and General Terms in Metrology (VIM) is the standard used to define unit measures in science (e.g. meter, degree Celsius, etc.).

While there are a number of advantages to using the CC technology, such as the flexibility to add new resources to respond to consumption peaks, it is important to point out that CC is not the solution to all computing problems. There are a few caveats, one of which is that the infrastructure can become so complicated, with many nodes and inter-node relationships, that its time behavior is unreliable. This unreliability is one of the concerns that we address in this paper.

E. Bautista’s performance measurement framework for cloud computing

Bautista proposes a generic Performance Measurement Framework for cloud computing based on the COSMIC’s model of generic software, presented on figure 2. It describes the cloud computing system and its detailed attributes that can determine the system’s performance, specifically quantifying the efficiency and reliability concepts, through measurement functions that assign values to the properties, thus allowing measurement and evaluation. The Framework can use and share different base measures across different concepts, using a mechanism of entries and exits a communication channels. Base measures are obtained as the result of a measurement method, and are analysed by analysis functions on the data storage system.

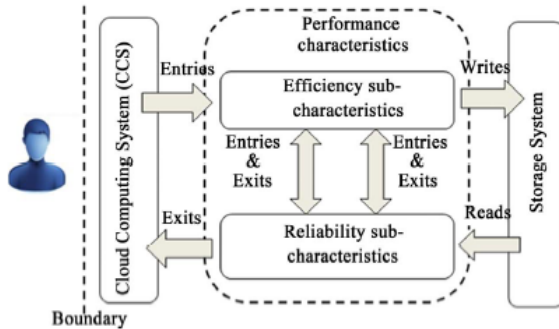


Figure 2: Generic performance measurement Framework [1]

III. CASE STUDY

Bautista’s Performance Measurement Framework proposes interesting challenges, such as the mapping of base measures to the quality concepts, for example. With the objective of validating this framework on a real life case, this case study was performed using performance data from data center logs. These logs are automated data collections that are used for troubleshooting and maintenance purposes, thus being considered secondary data.

The analyzed logs are extracted from 12 000 different servers and 80 000 different client computers, on different time zones, from a private cloud infrastructure. This yields a large volume of data, as described on section 4. This infrastructure is used by the organization for different needs, and on this research we focused on one of its many applications.

On the effort of experimenting with and attempting the validation of the framework, many quality characteristics and sub-characteristics can be chosen; due to the availability of data, the researchers chose to implement only the time behavior characteristic, recognizing this as one of the research’s limitation. Additionally, as only the time behavior characteristic is analyzed, no further decisions regarding performance tradeoffs, such as “where could we improve the performance? Which would be the risks? How much would it cost?”, amongst many others, can be generalized. Finally, we don’t expect this work and its conclusions to be amply generalizable to other researches, as it relates only to the primary validation of a theoretical framework,

Our case study was conducted on commercial software running on the CC infrastructure of a private cloud **that mainly hosts and enables access to a company’s email services**. Organizations devote considerable administrative effort to retaining control of as much of their private cloud infrastructure as possible. A simplified version of the more complex infrastructure of the CC network in this study is represented in the high level network map depicted in Figure 3. The 12 nodes (or steps) of the network are shown, along with the information flow between the users and the email service.

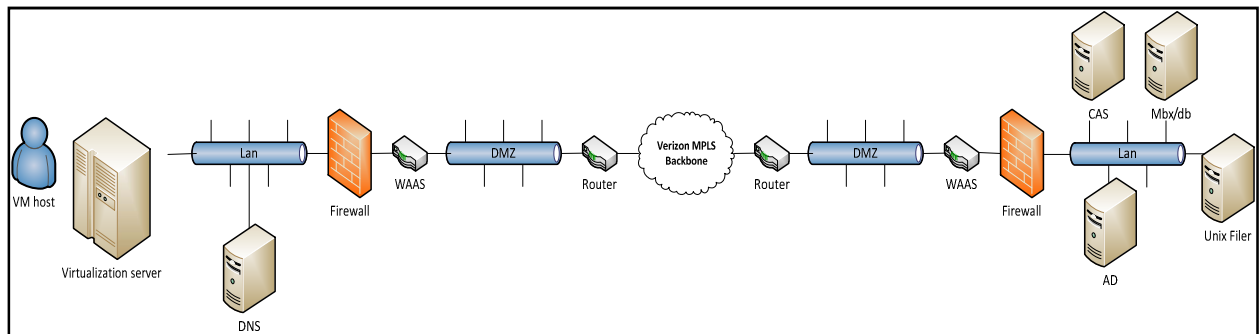


Figure 3: High level network map of a Cloud Computing application for an email service (from the authors).

These 12 nodes are the following:

- 1) **VM Host** (Virtual Machine Host): the server, either physical or virtual, that provides computing resources to one or more virtual machines
- 2) **Virtualization server**: a virtual host capable of creating a local cluster of virtual machines
- 3) **DNS** (Domain Name System): the local server for name resolution
- 4-8) **Firewall, DMZ** (demilitarized zone): software components associated with gateways that provide security and communication between a computer system and the Local Area Network (LAN) or Wide Area Network (WAN)
- 9) **CAS** (Client Access Server): the server cluster that receives, queues, and processes user requests for data
- 10) **MBX/db** (Mailbox database): a database server that contains, organizes, and indexes user data
- 11) **AD** (Active Directory): the services that handle security, authorization, and name resolution on the data center side of the system
- 12) **Unix Filer**: a file server for the storage, backup, and archiving of high volume user data not handled by the MBX/DB.

Simplification of the network map representation involved removing items like the individual physical servers and virtual machines that make up the server clusters. This was done to highlight a broader concept of tasks, such as those

performed by nodes labeled CAS or AD. In addition, only one network path is represented in Figure 2, which is not always the case in real situations. For example, while a single transaction will always flow via a single channel, multiple channels will often be available for transmitting transactions, such as fault tolerant communication links, switches, firewalls, and routers. Finally, the host machine is represented here unconditionally as either a physical or a virtual machine.

As indicated in section 2.4, many measures are captured by the software that makes up this CC infrastructure. Most of these measures are considered derived measures from an ISO point of view, because they use at least two base measures. The derived measures that we use in this case study are the most atomic and granular measures available and extractable from the servers. Consequently, we have labeled them “low level derived measures” in the tables and appendices that follow.

For the network map presented in Figure 3, 159 low level measures have been identified as potential candidates to be used to reflect the end-user experience of the performance of the e-mail service, affecting one or more of the nodes.

The authors have elected to present only a small sample of the 159 different low level derived measures in Table 1, owing to the space and format restrictions of the paper.

Table 1: Subset of base and low level derived measures used in this case study (from the authors)

Host	Virtualization	Lan
Logicaldisk\% free space	Logicaldisk\% free space	IP\Frag Fails
Logicaldisk\% Idle time	Logicaldisk\% Idle time	Network\ Tx Queue Len
Processor \ %processor time	Processor \ %processor time	Network \ Total bytes /sec
System \ threads	System \ threads	Network \ Tx dropped
Logicaldisk\Avg. Disk Bytes /Read	Logicaldisk\Avg. Disk Bytes /Read	Network \ Tx Error
Logicaldisk\Avg. Disk Bytes /Write	Logicaldisk\Avg. Disk Bytes /Write	Network\% cpu utilization
Processor \ Interrupts/sec	Processor \ Interrupts/sec	IP\Hdr Error
Processor\Total Handle count	Processor\Active threads	Current concurrent connections

Table 2 presents the low level derived measures analyzed in this case study with the sole objective of measuring the time behavior characteristic (as defined by ISO 25010) of the email service on this private cloud. Table 2 has a column labeled Evaluation, which shows what is considered as the expected behavior according to industry standards. If the column shows ‘low’, then the lowest value is better. If it shows ‘high’, then the highest value is better.

As explained in section 4, for this paper, the authors have selected only the measures that are evaluated as LOW. Future research will address both HIGH and LOW measures, as further discussed on section 6.

There is one characteristic of the cloud computing applications that must be brought under greater detail: not all low level derived measures are to be treated as equal. This is represented by the fact, that, for example, one measure might impact more than one node. In that case, it

is interesting to classify the measures in some way that allows the reader to easily relate the impact of each measure on the system.

Observing figure 3, from the VM host (on the left) to the servers (on the right), we infer a data flow that is, on this image, horizontally aligned, as data is flowing from the left to the right and vice versa. With the objective of simplifying the reader’s comprehension, the authors propose the utilization, on this case, of two logical organizations of the measures: Vertical and Horizontal measures. Vertical measures would affect only one node on the above figure; Horizontal figures would affect more than one node, thus being inherently more impacting on the end user performance.

On the analysis presented on this paper, the researchers observed only horizontal measures, measures that could affect more than one node on the whole system. This

prompts another opportunity for further research using both types of measures.

Table 2: Base and low level derived measures and sub characteristics of time behavior on the cloud studied (from the authors)

Sub characteristic	Evaluation	Base and low level derived measures
Transmission	Low	CAS.System\Processor Queue Length
	Low	CAS.Web Service\Bytes Sent/sec
	Low	CAS.Network Interface\Network Bites
	Low	HOST.Outlook\RPCs attempted – UI
	Low	HOST.Process (Outlook)\IO Read Bytes/sec
	Low	HOST.Process (Outlook)\IO Write Bytes/sec
Time	Low	HOST.System\threads
	Low	HOST.Logicaldisk\Avg. Disk Bytes/Read
	Low	HOST.Logicaldisk\Avg. Disk Bytes/Write
	Low	HOST.Network Interface\Bytes Sent/sec
	Low	HOST.Outlook\Time AVG (200)
	Low	HOST.Physical Disk\Disk Read Bytes/sec
	Low	HOST.Physical Disk\Disk Write Bytes/sec
	Low	HOST.Process (Outlook)\Page Faults/sec
	Low	HOST.Processor\%Processor Time
	Task	Low
Low		CAS.Web Service\Current Connections
Low		MBX/DB.Network Interface\Bytes Received/sec
Low		HOST.Outlook\RPC UI Shown
Low		HOST.Process (Outlook)\% Privileged Time
Low		HOST.Process (Searchindexer)\% Privileged Time
Low		HOST.Process (Searchprotocolhost)\% Privileged Time

IV. METHODOLOGY

In this section, we describe the five phases we followed in performing the case study: 1) data collection; 2) choice of ISO characteristics and sub characteristics; 3) data organization; 4) data analysis; and 5) data presentation.

A. data collection

The data analyzed in this case study were collected automatically as part of the standard operational system data collection process for the private cloud. They are stored in LOG format for two different platforms, one for client machines and the other for servers, for future use. They can also be resorted for troubleshooting purposes.

The private cloud in this case study is composed of approximately 80,000 client machines and 10,000 servers and network devices. With this number of clients and servers, around 800,000 data points per minute are generated. To visualize this situation, imagine a spreadsheet which grows by 800,000 lines of data every second, with each line made up of approximately 1,000 characters.

This represents a rate of data collection of 1.9 GB per minute. For this paper, only 600 MB of these data has been studied –and have been partially been presented on figure 4.

B. Choice of ISO characteristics and sub characteristics

Using ISO/IEC 25010 (see section 2), it is possible to associate the vertical and horizontal measures to quality characteristics and sub characteristics proposed in this standard. With the data available in this case study, we were able to assess the **time behavior** quality characteristic via the email service usage measures presented in Table 2. For convenience, in this paper, we used only those measures evaluated as LOW, mainly because there more of these than there are measures evaluated as HIGH.

C. data organization

This phase of the case study is concerned with the organization of the dataset. Initially, we chose to divide the data collected according to their three physical locations (North America, Europe, and Asia), and processed over a 1 week period during business and non-business hours. A sub grouping of the data was created per host status (machine

level) to allow us to compare usage on a machine by machine basis. In addition, in order to determine the time behavior of the whole system, a data grouping was created to represent the overall status of the nodes analyzed in the form of various indices and graphs, as presented in section 5. This data grouping was derived from Bautista's framework [1] and is partially implemented in this paper.

D. data analysis

The data were analyzed by observing two different sets of evidence: statistical analysis results, and the results of a visual examination of the time behavior graphs. With the statistical analysis results, we were able to compare the vertical and horizontal measures numerically. For this comparison, we looked at four values: averages, variances, kurtosis, and skewness.

We studied the time behavior graphs in two different formats: time lines and radial graphs. The time lines gave us an understanding of the cloud cycles, and the radial graphs enabled us to easily identify the groupings of the peaks. The time frame we considered for the radial graphs was 8 am to 6 pm, even though the company operates on the more typical 9 am to 5 pm timetable. This time frame (8am to 6pm) helped on identifying the beginning and end of the work cycles in work hours. One of these graphs is depicted in Figure 4 (small values are better).

It is important to note that, because of the number of data to be considered in these analyses, merely performing them has an impact on system performance.

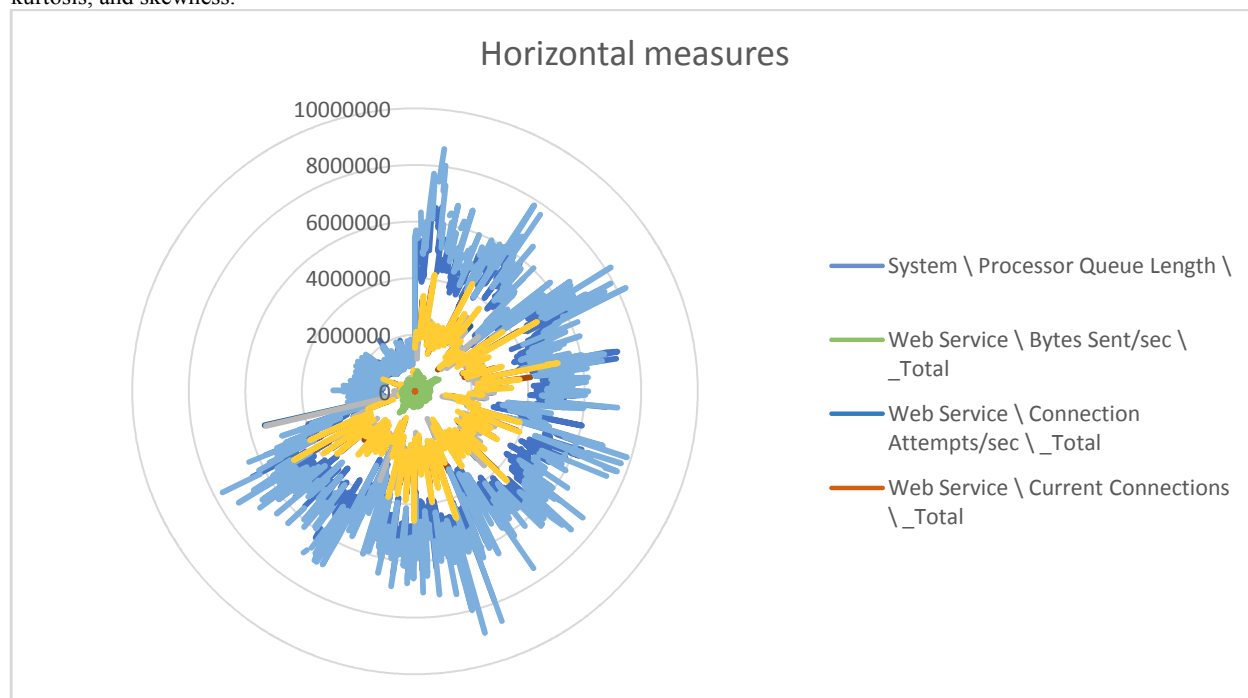


Figure 4: Some horizontal measures represented on an 8am to 6pm time frame. Higher numbers mean worse performance.

This graph was created using only a very small excerpt of the data available. It contains the 4 most relevant horizontal measures, calculated for the servers located on Europe. The upper quadrant of the image doesn't contain many data points because it corresponds to the time between 6pm and 8am, demonstrating a visual relation between measures such as connection attempts and system queue length.

E. Data presentation

One of the objectives in measuring the time behavior of the email service is to help with the administrative challenges of making decisions and taking action on the CC infrastructure when needed. With that requirement in mind,

the radial graph shows the evolution of the time behavior measures that contribute to the management of the email service.

The significance of the data is determined by measuring the area of the radial graph: the **larger** the graph, **the worse** the time behavior. Data collectors are presented in Figures 4 and 5

V. ANALYSIS

The objective of the case study is to try to measure the time behavior of the email service operating on a CC infrastructure. We tried to restrict the amount of resources consumed in collecting measures using a performance log

created by the commercially available tools that we use daily. Statistical evidence is corroborated by empirical knowledge, to the effect that the more resources are consumed, the worse the time behavior of the email service. This can be easily seen by comparing business hours and non-business hours in Figure 4.

Table 3 provides a sample of the statistical analysis, which suggests that business hour skewness is positive. This shows that, in general, the users of the email service tend to exhibit worse than average time behavior during business hours, because the measured characteristics demonstrate better behavior on **lower values**. There is also one high Kurtosis value, which suggests that, wherever the peaks occur, they are high in comparison with the measured average. The levels of variance are, in all cases, quite high relative to the mean, suggesting an abnormal distribution

This example helps to illustrate that “average usage” isn’t a very good measure to use in analyzing the ISO’s Time Behavior quality characteristic. These initial statistical elements also make it possible to compare single nodes

with the whole infrastructure, which helps to determine possible points of failure of the CC infrastructure. These findings point to a need for other statistical methods, to be investigated in future case studies.

Considering the many factors involved in the analysis of a CC environment, we will next consider the design of a collector for the horizontal measures. This will allow a general, multi node observation of the cloud that should make it possible to identify single moments of peak resource usage, as well as a grouping of averages. Figure 4 shows a graph with a complete data series, while Figure 5 shows only a single moment in time. Finally, the evolution of the index over time is illustrated in Figure 6.

The time behavior in this time series shows a peak in usage early on Tuesday and another at the end of the day on Friday. This situation should be further investigated and interpreted using representations similar to those in Figures 4 and 5.

Table 3: Base statistics for one measure, business hours (ON) vs. non business hours (OFF) (from the authors)

<i>Web Service \ Bytes Sent/sec \ Total (On hours)</i>		<i>Web Service \ Bytes Sent/sec \ Total (Off hours)</i>	
Mean	43 KBps	Mean	28 KBps
Standard Error	1.5 KBps	Standard Error	979.83
Median	20 KBps	Median	18 KBps
Mode	#N/A	Mode	#N/A
Standard Deviation	84 KBps	Standard Deviation	35 KBps
Sample Variance	7GBps	Sample Variance	1 GBps
Kurtosis	27.77	Kurtosis	49.97
Skewness	5.01	Skewness	5.73
Range	821 989.44	Range	428426.46
Minimum	2KBps	Minimum	3.1 KBps
Maximum	829 MBps	Maximum	431MBps
Sum	124978002.8	Sum	37266022.34
Count	2857	Count	1309
Largest (5)	691MBps	Largest (5)	343MBps
Smallest (5)	3 MBps	Smallest (5)	3.2 KBps
Confidence Level (95.0%)	3 MBps	Confidence Level (95.0%)	1.9MBps

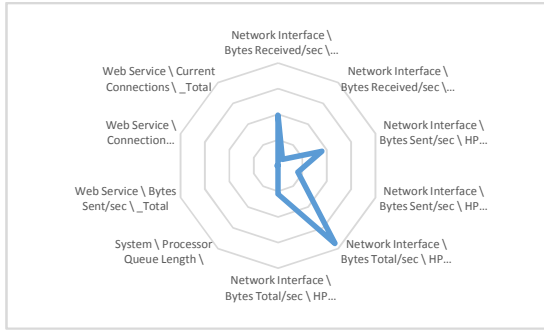


Figure 5: Time behavior at a single moment in time. On the graph in Figure 5, we can see that a number of low level derived measures are activated in a single moment in time. This should help us to further refine the graph presented in Figure 5.

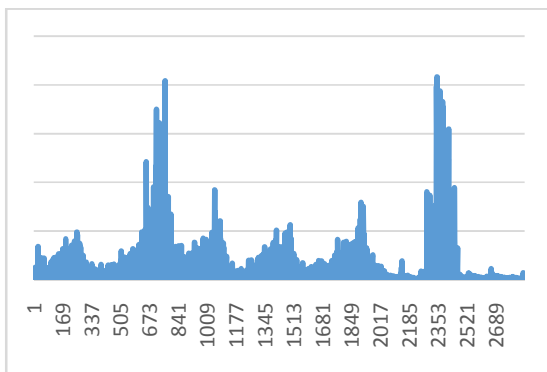


Figure 5: Time behaviour index from Monday at 12 am to Sunday at 11 pm.

The index illustrated in Figure 5 was generated by measuring the areas of each of the moments in time (see Figure 4 for an example of the graphical representation of a single moment). It shows peaks on Tuesday morning and Friday afternoon. These peaks could be further investigated, using the index to analyze the time behavior graphs for each of the peak occurrences. In this graph, every number on the X axis corresponds to one data point. This representation can be used to help identify which data point should be analyzed for each peak; for example, events numbered 720 and 2418 for this case study

VI. CONCLUSION AND FUTURE RESEARCH

This paper demonstrates that it is possible to organize measures currently available in the performance log files of a typical data center using a CC infrastructure, and use them to show the time behavior quality characteristic as defined in the ISO's Software product Quality Requirements and Evaluation (SquaRE) series of standards following Bautista's proposed quality measurement framework. Three main challenges become apparent as a result of this case study analysis: collecting, processing, and representing the data.

Data collection from several hosts is a complicated issue because of the amount of data generated and the resources consumed during the generation process. Also, analyzing time behavior may affect the quality of the system, simply because of the additional overhead as a result of collecting, processing, transmitting, and storing the data. The processing for this empirical study was performed ex post facto in an offline database. Processing the same amount of data during production

time would be an interesting computational challenge. The representation of multivariate data is a challenge in itself, with radial graphs proposing an interesting solution. However, these graphs are not a widely known form of data representation, which contributes to the difficulty inherent in performing this step.

Multiple avenues for further research follow from this paper: more of the base and low level derived measures that make up the other quality characteristics of the ISO 25010 model should be used; a longer time frame could be studied; and other statistical methods could be used to give a better answer to the research questions.

Finally, the authors also suggest that more research is required to reinforce the validity of this framework and expand our understanding of it.

VII. REFERENCES

- [1] L. Bautista, A. Abran and A. April, Design of a Performance Measurement Framework for Cloud Computing, Journal of Software Engineering and Applications, Vol. 5 No. 2, 2012, pp. 69-75, 2012.
- [2] N. Mirzaei, cloud computing, Institute Report, Community Grids Lab, Indiana.Edu, 2008.
- [3] S. Sivathanu, Y. Mei, L. Liu and X. Pu., Performance Measurements and Analysis of Network I/O Applications in Virtualized Cloud, <http://citeseerx.ist.psu.edu/viewdoc/download?doi=10.1.1.165.6742&rep=rep1&type=pdf>, 2010.
- [4] B. R. Prasad, E. Choi and I. Lumb, A taxonomy, survey, and issues of Cloud Computing Ecosystems, London: Springer-Verlag, 2010.
- [5] M. Creeger, "CTO roundtable: cloud computing," in *Communications of the ACM*, 2009.
- [6] N. Phaphoon, N. Oza, X. Wang and P. Abrahamsson, "Does Cloud Computing deliver the promised benefits for IT industry?," *Proceedings of the WICSA/ECA*, pp. 45-52, 2012.
- [7] M. Armbrust and A. Griffith, "A Berkley View of Cloud Computing," UCB/EECS-2009-28 EECS Department, U.C.B, Berkley CA, 2009.
- [8] N. Gruschka and M. Jensen, "Attack surfaces: a taxonomy for attacks on cloud services," *Proceedings of the 3rd IEEE International Conference on Cloud Computing*, pp. 276-279, July 2010.
- [9] B. Grobauer, T. Walloschek and E. Stocker, "Understanding Cloud Computing Vulnerabilities," *IEEE Security and Privacy*, vol 9, no.2, pp. 50-57, 2011.
- [10] ISO/IEC, ISO/IEC 15939:2007, Systems and Software Engineering, Measurement process., 2007.
- [11] JCGM, International Vocabulary of Metrology – Basic and General Concepts and Associated terms, 2006.
- [12] ISO/IEC, ISO/IEC 25010:2010 SOFTWARE ENGINEERING - SOFTWARE PRODUCT QUALITY REQUIREMENTS AND EVALUATION (SQUARE) – SYSTEM AND SOFTWARE QUALITY MODELS., ISO/IEC JTC 1/SC 7, 2010.
- [13] ISO/IEC, ISO/IEC 25021:2012 Software Engineering -- Software product Quality Requirements and Evaluation (SQuaRE – Quality Measure Elements., ISO/IEC JTC 1/SC 7., 2012.
- [14] J. Desharnais and A. Abran, "Software Measurement Methods: An analysis of Two Designs," *Journal of Software Engineering and Applications*, pp. 797-809, 10 2010.
- [15] ISO/IEC, ISO/IEC., ISO/IEC JTC 1 SC38:Cloud Computing Overview and Vocabulary,, Geneva, Switzerland: International

- Organization for Standardization., 2012, .
- [16] ISO/IEC, ISO/IEC, ISO/IEC DIS 17789: Information technology - Cloud Computing - Reference Architecture, Geneva, Switzerland.: International Organization for Standardization, 2013.
- [17] A. Iosup, S. Ostermann, Y. Nezh, R. Prodan, T. Fahringer and D. Epema, "Performance Analysis of Cloud Computing Services for Many-Tasks Scientific Computing," *IEE TPDS Many-Task Computing*, November 2010.
- [18] Y. Mei, X. Pu and S. Sivathanu, "Performance Measurements and analysis of Network I/O Applications in Virtualized Cloud," Georgia Institute of Technology, Atlanta, GA, 2010.
- [19] S. Suakanto, S. Supangkat, S. Saragih and R. Saragih, "Performance MEasurement of Cloud Computing Services," *International Journal on Cloud Computing: Services and Architecture (IJCCSA)*, p. vol 2 no 2, April 2012.